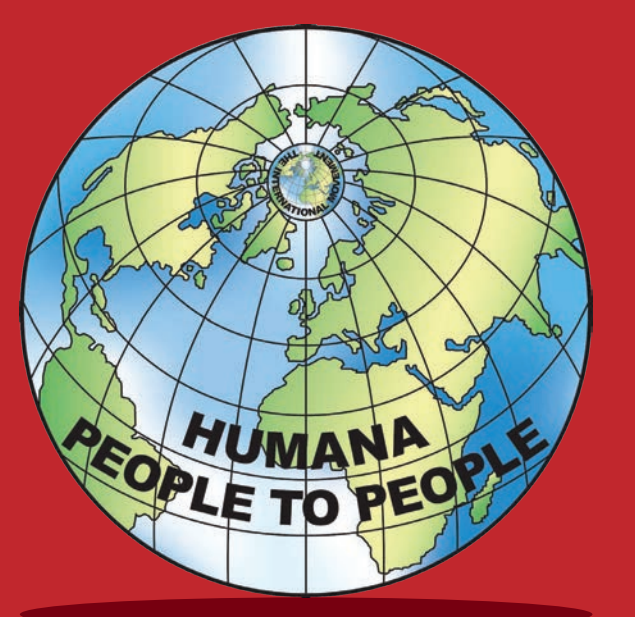




# 24 years of implementing Total Control of the Epidemic (TCE)

People at the heart of changing the course of the epidemic



## Putting People First Only the people can liberate themselves from the HIV epidemic

### Background

As HIV spread in Sub Saharan Africa (SSA) in the 1990s, the Humana People to People (HPP) Federation – a network of local organizations in 46 countries – developed its flagship Total Control of the Epidemic (TCE) model. Funded by PEPFAR, Global Fund, World Bank and others over 24 years, HPP local NGOs have implemented TCE in 12 countries (Angola, Botswana, China, DRC, Guinea-Bissau, India, Malawi, Mozambique, Namibia, South Africa, Zambia, and Zimbabwe), working with communities to co-create a locally-led HIV response putting people first.

### Description

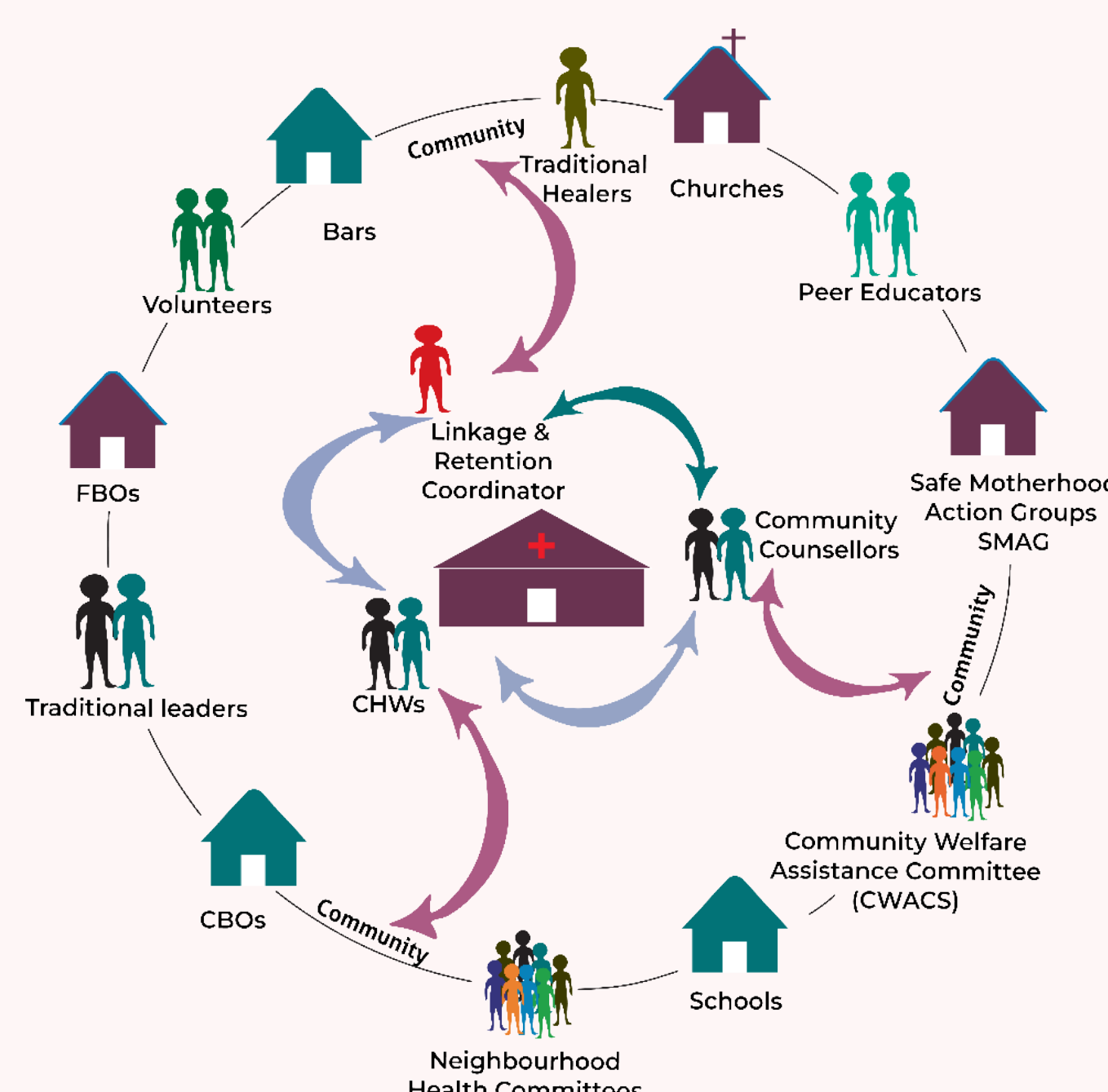
Rooted in the understanding that 'Only the people can liberate themselves from the epidemic', locally recruited Field Officers equip people with the knowledge and tools to take charge of their own health, break down stigma and discrimination, and reduce barriers to health services. TCE is flexible in design, uses data-driven decision-making and the latest epidemiological data to better target interventions, and is adapted to match the specific needs of each community and the target beneficiaries.

### Lessons learned

Since 2000, TCE has reached 24.8 million people across 12 countries. While TCE originally focused on the total mobilization of whole communities to address HIV epidemic needs, the model was quickly adapted to the evolving epidemiology, adding targeted services, strengthening community-facility integration, and addressing the 95-95-95 targets. TCE's impacts are evident across the entire HIV cascade.

### TCE puts people first by

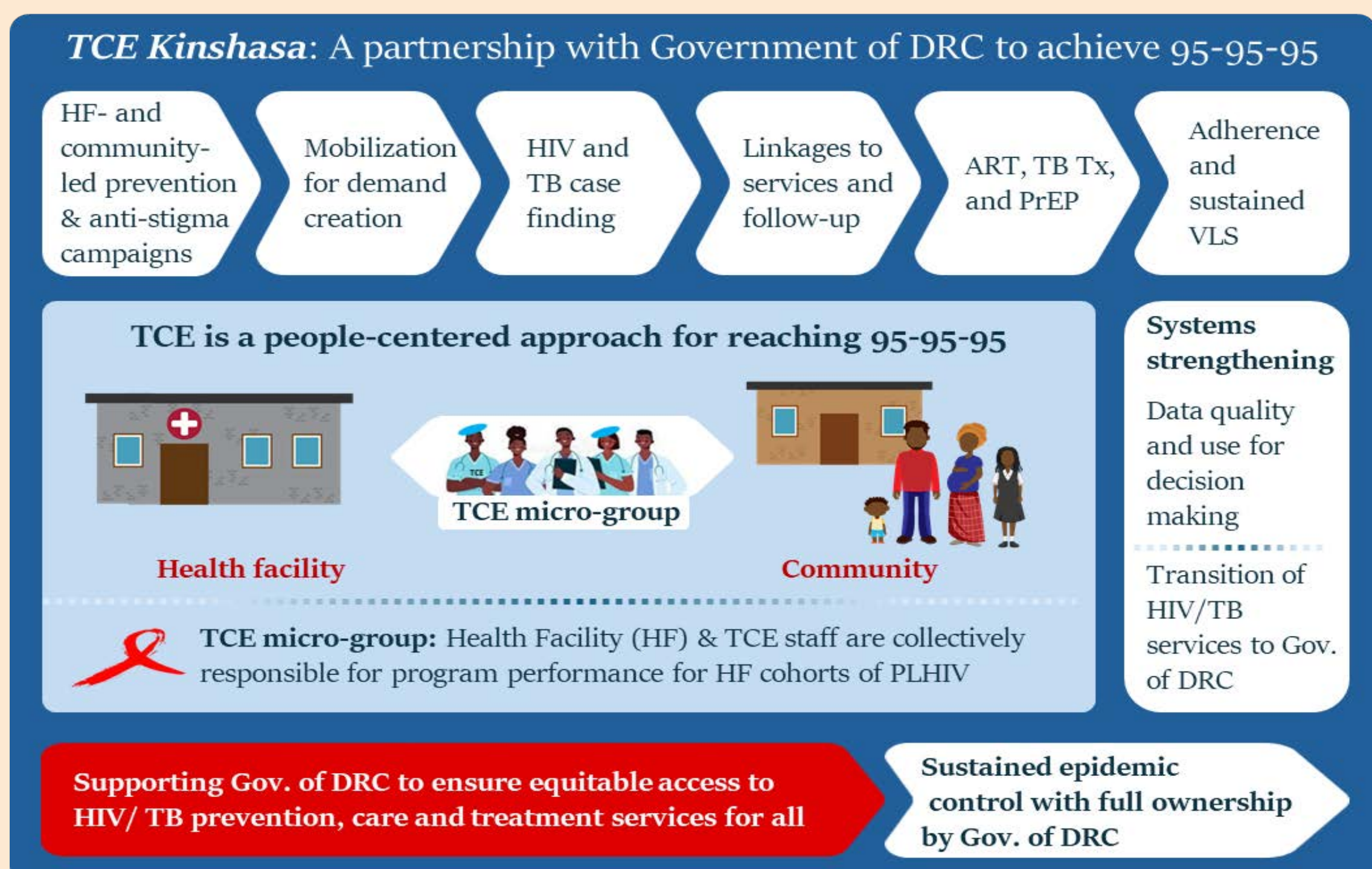
- Building the agency in people to take charge of their own health
- Mobilizing communities to fight stigma & discrimination
- Capitalizing on existing community structures and health systems
- Building people-to-people adherence models
- Providing wraparound services focused on whole person needs



Sustainability is rooted in the people and their passion for HIV and TB epidemic control

### Democratic Republic of Congo (DRC)

In DRC, local NGO HPP-Congo implements TCE with PEPFAR/ CDC support in partnership with the Government of DRC, as well as private and faith-based health service providers. From 2019-2023, together with 70 health facilities, HPP-Congo has used the TCE model to provide comprehensive HIV services to a cohort of 23,000 PLHIV including adherence support and VL monitoring and treatment for TB and advanced HIV disease.



### Conclusions

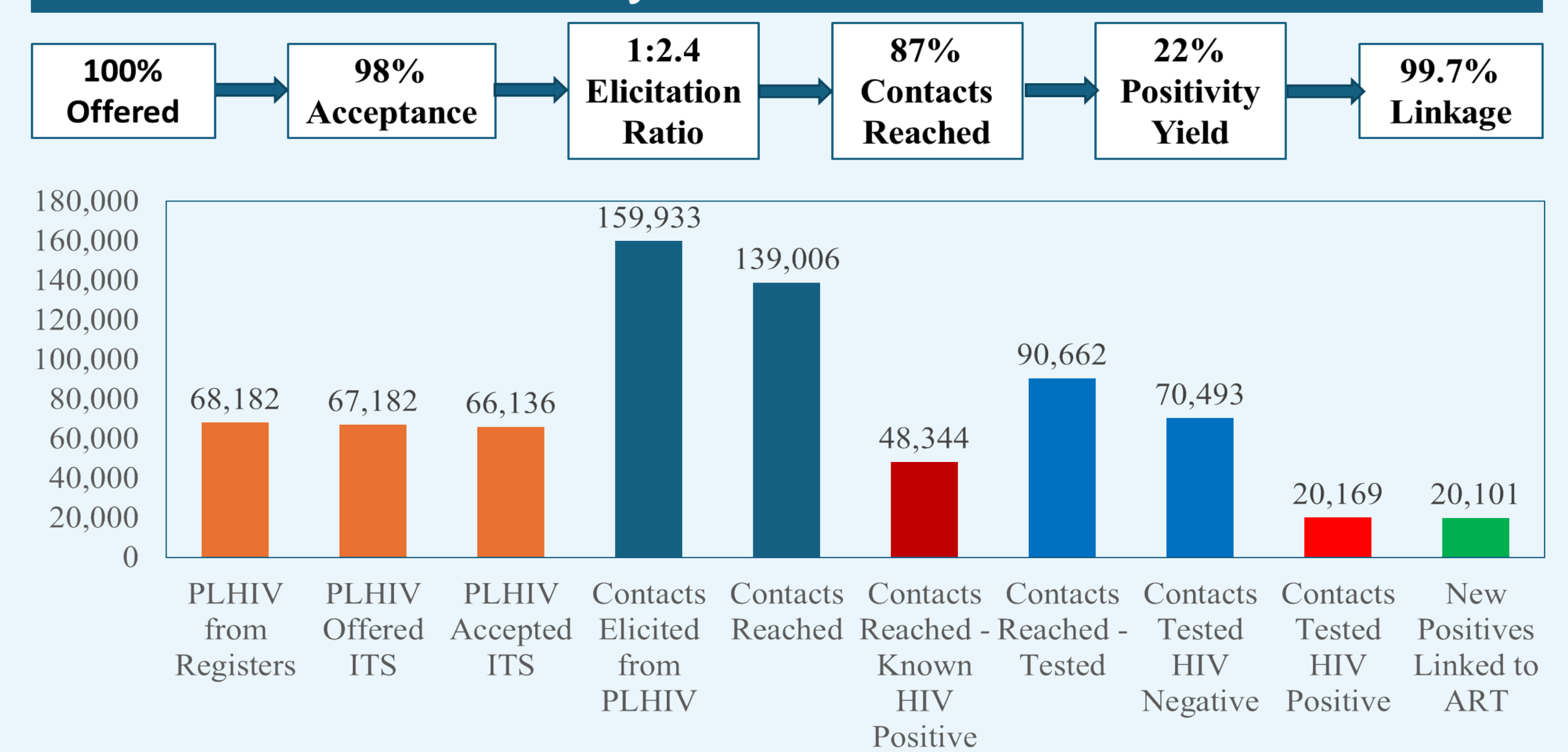
For 24 years, TCE, with the people-to-people principle at its core, has been used as an evidence-based, scalable, and sustainable model that works well in low resource settings to attain epidemic control. As countries achieve epidemic control, TCE is being adapted to address broader primary health care needs and support countries to move towards universal health care.

### Zambia

In Zambia, local NGO DAPP Zambia implements TCE in four of Zambia's ten provinces with funding from PEPFAR/CDC and US Department of Defense. Between Oct 2022-Sept 2023, TCE achieved a 22% HIV positivity rate in index testing services (ITS) and a 99.7% ART initiation rate.



### Overall Community Index Cascade – TCE Zambia



### Namibia

In Namibia, local NGO DAPP Namibia has implemented the TCE model for more than eighteen years with support from CDC and in close cooperation with the Ministry of Health and Social Services. Utilizing the TCE model, between Apr 2022-Mar 2023, the project succeeded in ensuring that 100% of babies born to HIV-positive mothers were confirmed HIV-free at 18-months after receiving community-based Prevention of Mother to Child HIV transmission support from TCE community health workers. TCE community health workers and families celebrate together each baby being confirmed HIV-free at 18-months.



**AIDS 2024**  
22 – 26 July

Presented at AIDS 2024, the 25th International AIDS Conference