



Authors: *Peter Chibatamoto; Watipa Gaogane; Alice Sejamitlwa; Emmanuel Kanyane; Caroline Nyambe; Lekopanye Difongo; Kgomotso Sibiya and Moses J. Zulu*

Affiliations: *Humana People to People Botswana (HPP),*

Catalysts of change: Key population-led innovations

Community HIV Index Testing:

A case for revitalizing Primary Health Care by improving uptake of Same Day/Fast-Track ART initiation of newly diagnosed PLHIV in Botswana





Summary

What is your main question?

To what extent does community-based HIV index testing identify and link new PLHIV to treatment in high coverage (>95-95-95) settings?

What did you find?

Community-based HIV index partner testing is effective in both HIV case-finding and timely ART initiation for both men and women.

Why is it important?

As donors reduce their investments in HIV, public health systems will require effective, affordable and scalable models of care that effectively leverage community health workers to sustain high coverage across the HIV cascade as part of the PHC package.



AIDS 2024

- Established in 2001, as a national NGO in Botswana.
- **Mission:** to empower people with ***tools, knowledge and skills*** to foster their own development in their own families, communities and the nation.
- **Our health projects:** build on the active participation of people themselves in their communities.
- **Current HIV activities in Botswana:** provide community-based HIV index testing/linkage services and OVC/DREAMS in fifteen of 27 health districts.



Botswana is making good progress towards epidemic control



95.1%

of adults living with HIV know their HIV status



98.0%

of those who were aware of their HIV status were on ART



97.9%

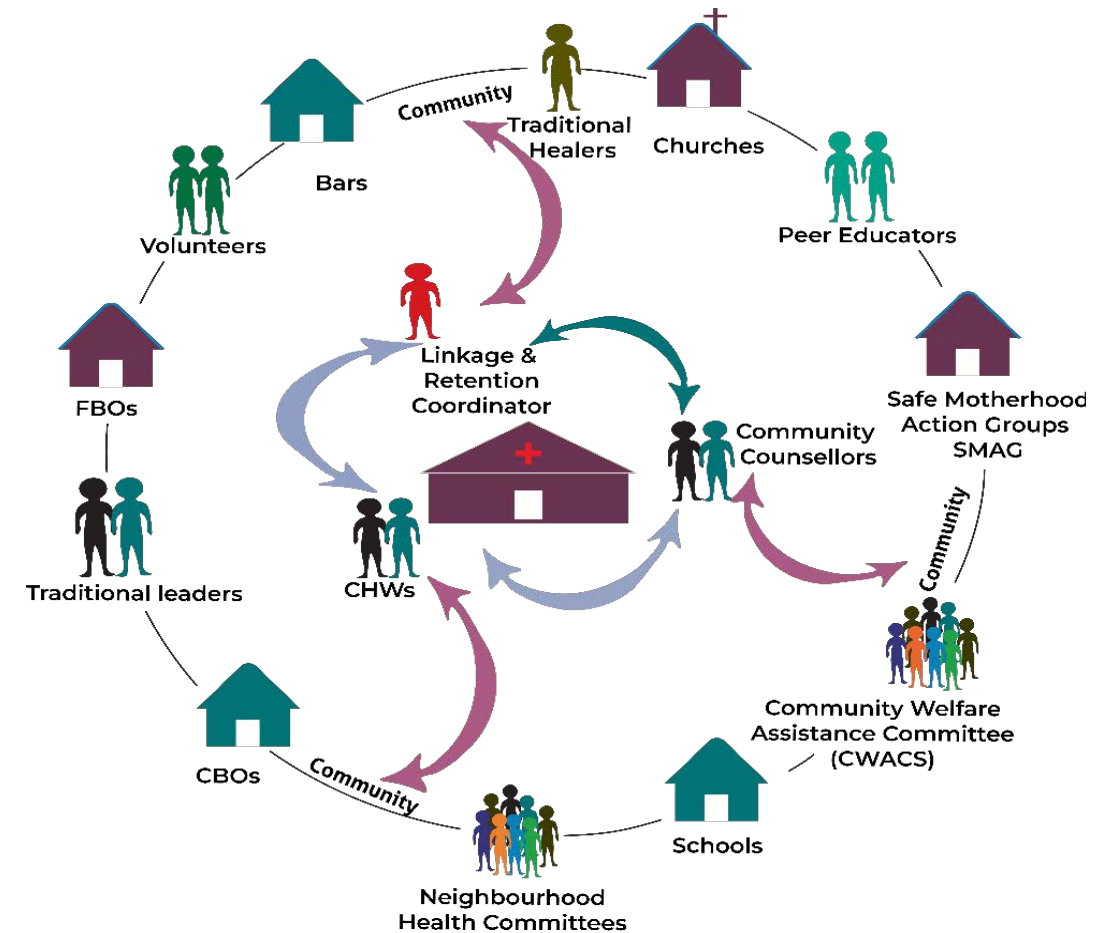
of those who were on ART had viral load suppression

HPP Botswana has been implementing Total Control of Epidemic (TCE) since 2002



AIDS 2024

- Building the **agency in people** to take charge of their own health.
- Mobilizing communities to fight **stigma & discrimination**.
- Capitalizing on existing **community structures** and health systems.
- Building **people-to-people adherence** models.
- Providing wraparound services focused on **whole person** needs.



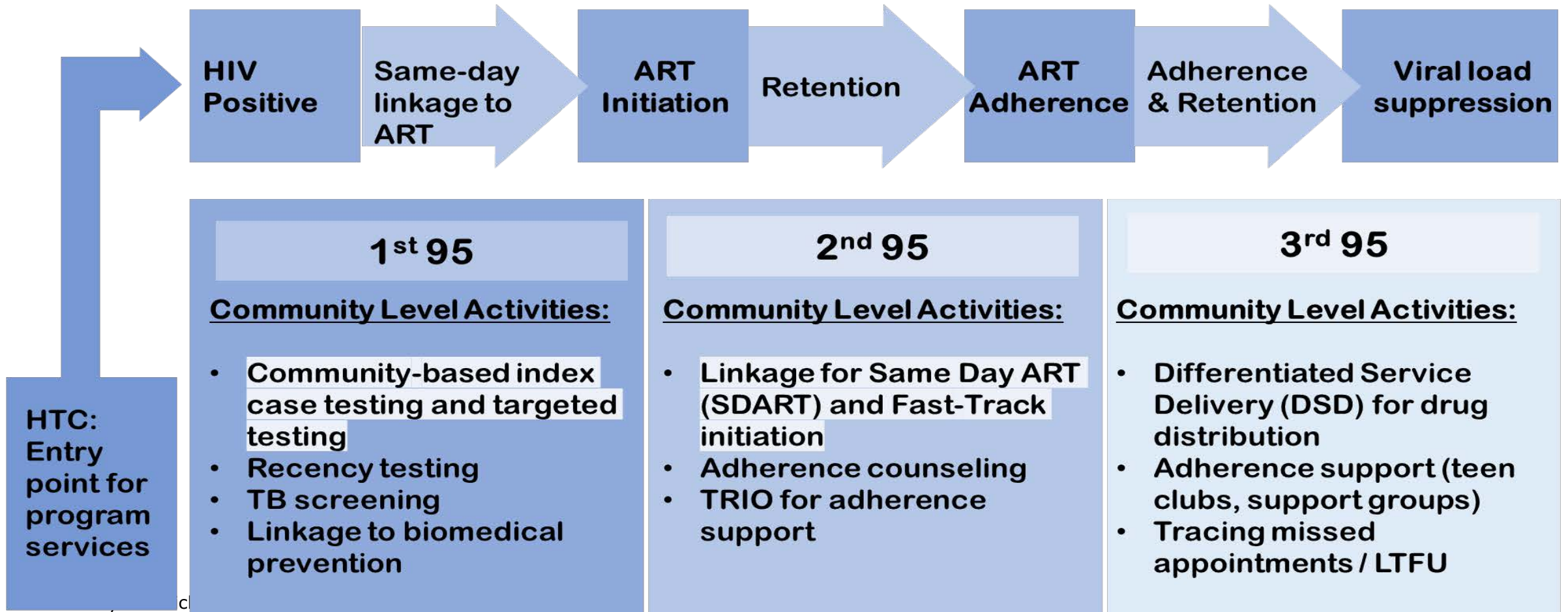
Sustainability is rooted in the people and their passion for HIV and TB epidemic control

HPP Botswana Project



 AIDS 2024

TCE Process for Engagement of Receivers of Care (ROC)



Overview of our approach to TCE community-based index case testing

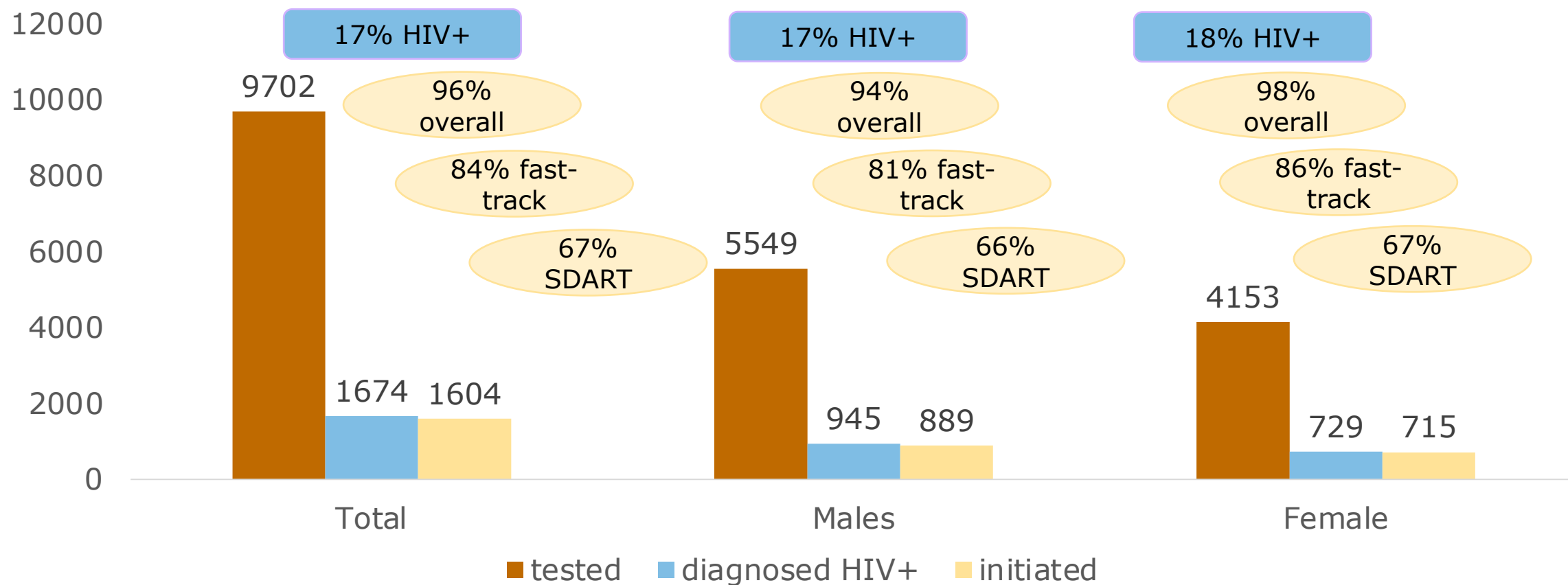


1. Start with health facility lists of PLHIV.
2. Engage PLHIV as index clients and elicit their sexual contacts for HIV testing.
3. Screen contacts for HIV at community level using HIV test kits.
4. Confirm HIV positive screens through diagnostics HIV rapid test kits.
5. Offer clients a choice of same-day initiation (SDART) or fast-track (which in two weeks) and provide counselling and linkage support.
6. Provide follow up to confirm linkage.

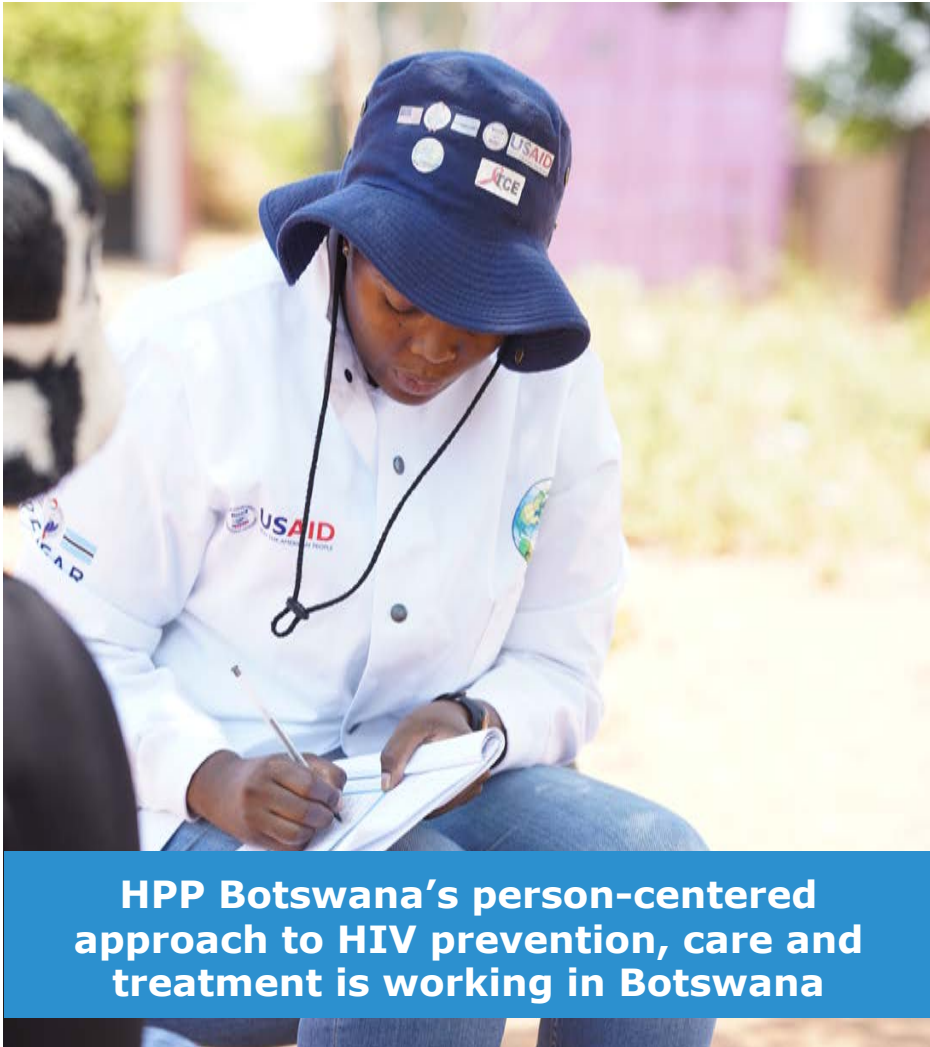
Results achieved



HPP Community index testing results and ART initiation by sex, March 2021-Sept 2023



Conclusion / Next steps:



HPP Botswana's person-centered approach to HIV prevention, care and treatment is working in Botswana

1. Community-based HIV index partner testing is effective in HIV case-finding and timely ART initiation amongst both men and women, even in high coverage settings, like Botswana.
2. Index case testing may be effective in reaching hidden pockets of unknown HIV cases necessary for closing the gaps in the HIV cascade.
3. Synchronization of community index partner testing with same day/fast track ART initiation is an important treatment as prevention intervention in supporting Botswana's goal of ending AIDS by 2030.
4. Community-based HIV index partner testing with SDART / Fast Track ART can play an important role in Botswana's revitalization of PHC and sustaining epidemic control.



MULTUMESC
 SPASIBO
 MAAKE
 VINAKA
 MATURNUWUN
 GRAZIE
 MAAKE
 ASANTE
 MATONDO
 GRAZIE
 TERMAKASIH
 SPASIBO
 KIITOS
 DANKE
 OBRIGADO
 DANKE
 MERCI
 GRAZIE
 DANKE
 WELALIN
 CHOKRANE
 MULTUMESC
 MATURNUWUN
 DANKE
 WELALIN

THANK YOU

MULTUMESC
 NIRRINGRAZZJAK
 GRACIAS
 DANKE
 MATONDO
 KIITOS
 WELALIN
 VINAKA
 MICHCHAKKERAM
 SALAMAT
 VINAKA
 DANKE
 SPASIBO
 GRACIAS
 DANKE
 CAMONBAN
 GRAZIE
 MAAKE
 KIITOS
 UATSAUGRAUKOJ
 ARIGATO
 MAAKE
 SPASIBO
 MATONDO



USAID
 FROM THE AMERICAN PEOPLE

